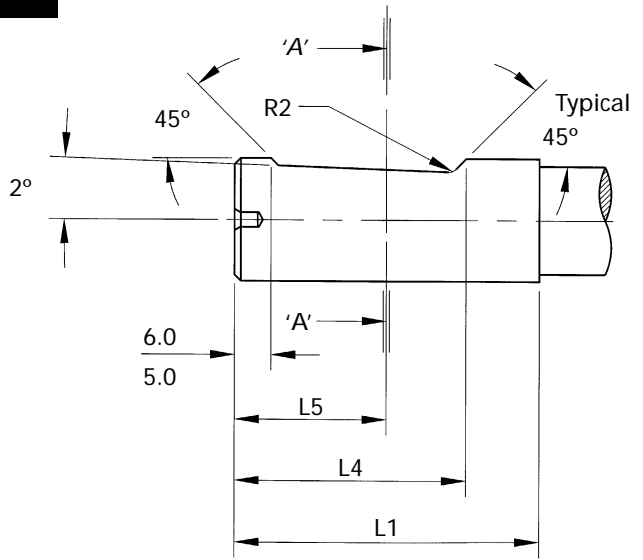
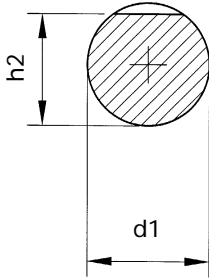
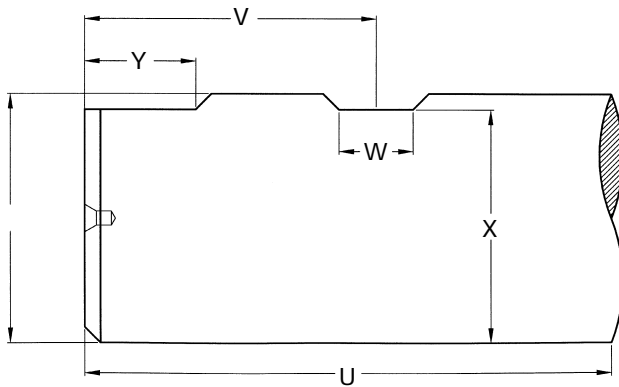


Din 6535 form 'HE' shank



d1	h2	L1	L4	L5	R2
6.000/5.992	5.10/5.03	36	25	18	1.2
8.000/7.991	6.90/6.81	36	25	18	1.2
10.000/9.991	8.50/8.41	40	28	20	1.2
12.000/11.989	10.40/10.29	45	33	22.5	1.2
14.000/13.989	12.70/12.59	45	33	22.5	1.2
16.000/15.989	14.20/14.09	48	36	24	1.6
18.000/17.989	16.20/16.09	48	36	24	1.6
20.000/19.987	18.20/18.07	50	38	25	1.6

Weldon Shank



S	U	V	W	X	Y
3/8	1,9/16	25/32	9/32	0.325	-
1/2	1,25/32	57/64	21/64	0.440	-
5/8	1,29/32	61/64	13/32	0.560	-
3/4	2,1/32	1,1/64	29/64	0.675	-
7/8	2,1/32	1,1/64	29/64	0.810	1/2
1	2,9/32	1,9/64	33/64	0.925	1/2
1,1/4	2,9/32	1,9/64	33/64	1.156	1/2
1,1/2	12,11/16	1,3/16	33/64	1.406	9/16
2	3,1/4	1,27/32	45/64	1.900	27/32
2,1/2	3,1/2	1,15/16	45/64	2.395	27/32